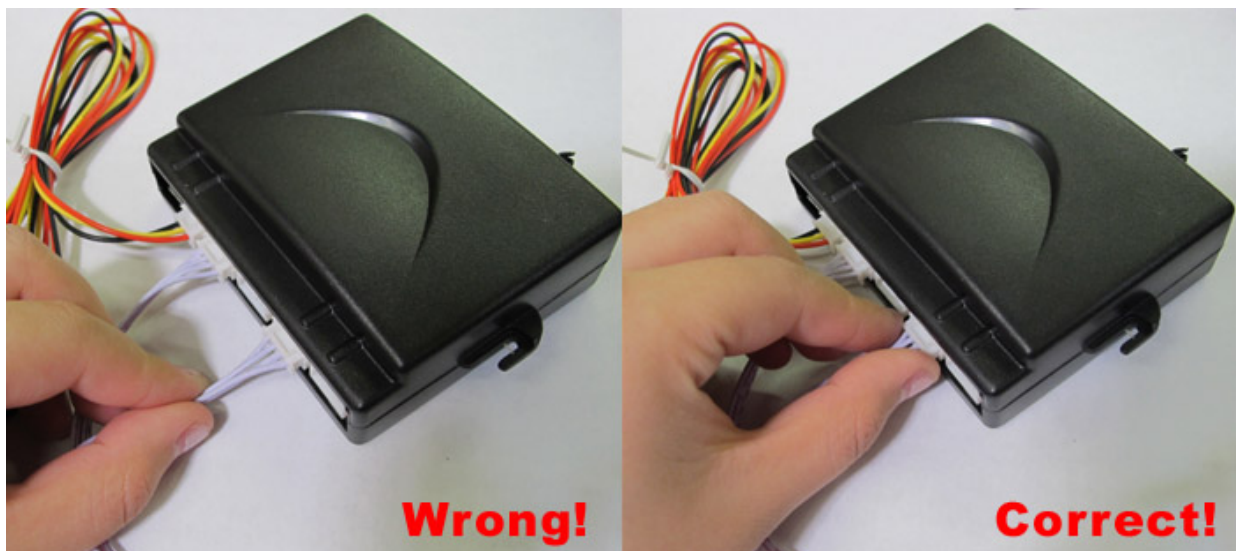
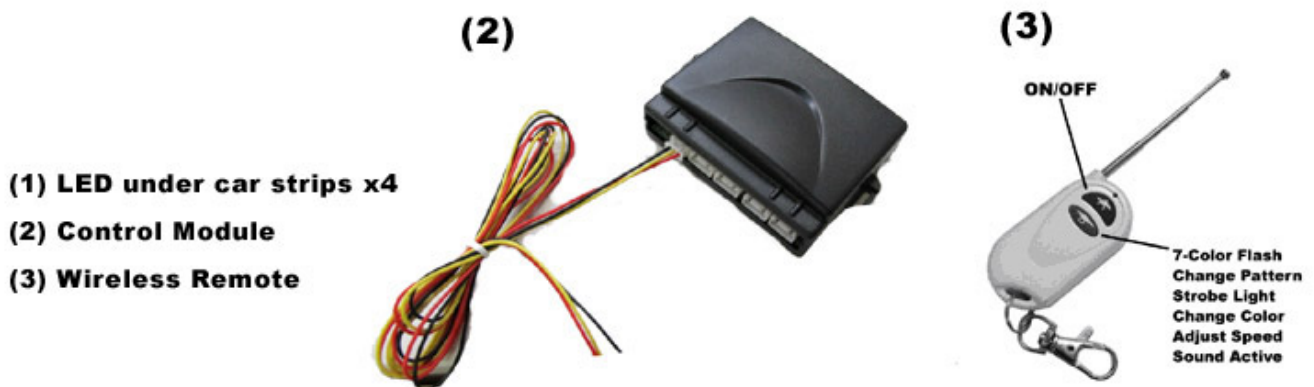
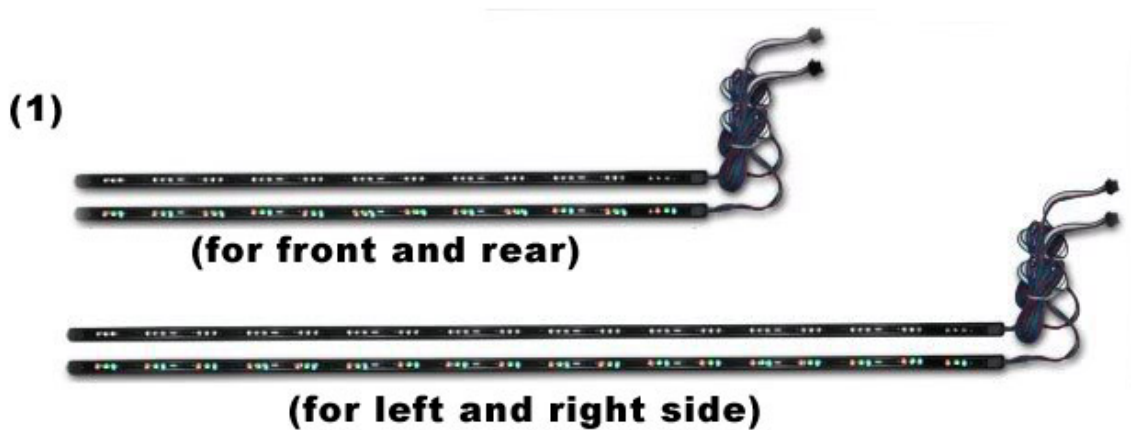


iJDMTOY.com 7-Color LED Under Car Lights Installation Guide

Installation:

1. Mounting the **under car LED strip lights**. Due to the limited length of the wiring harness, please make sure to measure the distance from the places where you want to install the LED strip lights to the place where you want to install the control module before you actually mount them on. Also, try to install the LED Strip Lights under the chassis where the LED Strip Lights won't be visible.
2. After you have figured out where to install the LED Strip Lights, use zip ties to mount the LED strips according under the chassis. Make sure to tie the LED Strip straight and tight.
3. After you have all four LED Strip Lights properly mounted, do the same for the wiring of each LED strips and connect them to the control module which should be mounted inside the engine bay.
4. Plug all four wirings to the control module and connect the positive (red) and negative (black) harness to the stock battery's positive (red) and negative (black)



Pull from the wire will cause damage, pull from white plug instead